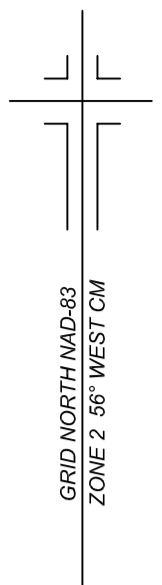


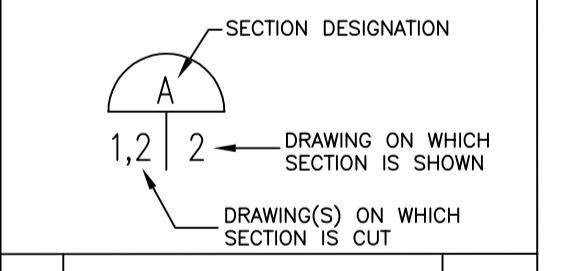
© RED INDIAN SURVEYS LIMITED, 2016.
 UNAUTHORIZED USE, ALTERATIONS OR
 REPRODUCTION IS PROHIBITED BY LAW.
 AS OUTLINED IN "THE COPYRIGHT ACT."
 HOWEVER, USE & REPRODUCTION THEREOF
 BY OR ON BEHALF OF THE PERSON FOR
 WHOM THIS SURVEY PLAN IS PREPARED IS
 PERMITTED, PROVIDED THAT NO ALTERATIONS
 WHATSOEVER ARE MADE THERETO.



1. THIS SURVEY WAS CONDUCTED ON:
2. NO ADJUSTMENTS HAVE BEEN MADE TO THIS SURVEY.
3. SCALE FACTOR HAS BEEN APPLIED
4. ALL COORDINATES ARE EXPRESSED IN METRES.
5. ALL BEARINGS ARE GRID BASED ON N.F.L.D. 3 DEGREE TRANSVERSE MERCATOR PROJECTION.

LEGEND:

ORIGINAL GROUND	---
FINISHED GRADE	---
STORM SEWER	—ST—
SANITARY SEWER	—SA—
WATER LINE	—W—
SERVICE	---
DOUBLE SERVICE	---
DITCH I.L. = INVERT LEVEL	—D—
TOP OF PIPE = T/P	—T/P—
INVERT LEVEL = I.L.	—I.L.—
TOP OF GRATE OF CATCH BASIN = T/G	—T/G—
TOP OF COVER OF MANHOLE = T/C	—T/C—
HYDRANT	○ HYD
CATCH BASIN	■ CB
SANITARY MANHOLE	○ SMH
DRAINAGE/STORM MANHOLE	○ DMH
EXISTING GROUND ELEV.	▲
CONTROL MONUMENT	▲
CAPPED IRON PIN	○
PLACED IRON PIN	○
NAIL	●
POLE OR LIGHT STANDARD	○
PROPERTY DEALT WITH	---
FENCE LINES	—x—x—
CHAIN LINK FENCE LINES	—x—x—
POWER - TELEPHONE LINES	---
EASEMENTS	---
FOUND	Fd
RE-ESTABLISHED	R



NO.	REVISIONS	ISSUED

RIS RED INDIAN SURVEYS LTD.
 SURVEYORS & ENGINEERS

OWNER:
 CECON DEVELOPMENT CORPORATION

PROJECT:
 EASTGATE SUBDIVISION
 BANNOCK STREET EXTENSION
 PHASE 4, GANDER, NL

SCALE: 1:750 DATE: OCTOBER 13, 2016

SURVEYED BY: GS DRAWN BY: EBS DWG #

PROJECT NO.
 G-16-181-MP

NOTE: AREA PHASE 4 BANNOCK STREET EXTENSION = 50,125 Sq.m.
 TOTAL AREA OPEN SPACE = 7,477 sq.m.

N 5 427 161.014m
 E 407 379.092m

N 5 427 202.747m
 E 407 469.970m

CECON DEVELOPMENT CORPORATION